

### Features

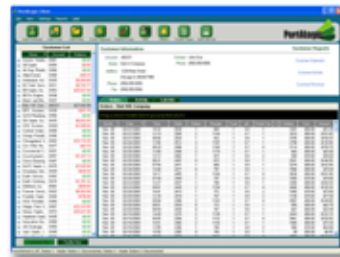
- Provides Secure Access to Station by Proximity Card, Magnetic Card, or Pin Number
- Controls Gate or Access Door (If Applicable)
- Captures information including Date & Time Stamp of Hauler, Truck Number, Volume, Waste Type, and More
- Real-Time Access to Station Activity from Office PC
- Collects Load Samples
- Prints Hauler Receipts
- Unlimited Number of Users
- Preformatted Billing & Reports



### Description

PortALogic is a septage receiving system designed to save treatment plants time and money. It allows administrators to easily create an account for each hauler. Accounts can then be accessed via magnetic card or keypad pin number. The PortALogic Server tracks the waste being received and creates a

detailed record. The real power of PortALogic is the capturing and managing of data. It gives haulers receipts of their loads, staff can monitor station activity which increases revenue through more detailed data, and saves time in the office with more accurate reports and billing.



### Benefits



- User friendly system the requires minimal training
- Facilities have access to accurate reports & billing
- Easy to install & maintain
- Regular software updates are available
- Does not impose on SCADA System
- Integrates with different types of projects (Septage, Water, Grease)
- Comes with standard features, but is flexible too
- Backed By Outstanding Customer & Technical Support



**EleMech Inc.**

U.S.A. Original Equipment Manufacturer

For more information:

call 630.499.7080 or visit [www.PortALogic.info](http://www.PortALogic.info)