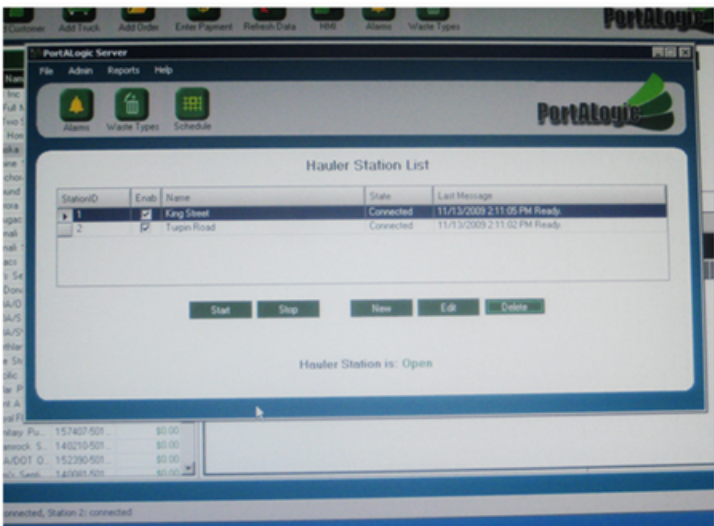


Anchorage, AK



Description

Turpin Road and King Street Septage Receiving Facilities are each provided with PortALogic Hauler Access Stations.

Each station was designed to use the plant's proximity cards and keypad to access the remote, gate-secured discharge area.

Each hauler station was designed for severe cold and includes a heavy-duty heater and insulated enclosure.

PortALogic server communicates with both stations and automatically retrieves loads. Hauler access privilege can be disabled/enabled remotely from the office.

Control of entrance gate, flow meter, inlet valve, lights and tank levels are all included and monitored by PortALogic.

Database is located remote from site on an IT Managed Server.

PortALogic Server and Client software installed at administrator's office 25 Miles away. All data uploaded and managed using a networked connection.

